



CENTURY CRANE ENGINEERS (P) LTD.
Truck, Tractor & Floor Mounted Crane

- KNUCKLE BOOM CRANE**
- STRAIGHT BOOM CRANE**
- ARIEL WORK PLATFORM**



TRUCK MOUNTED KNUCKLE BOOM CRANES

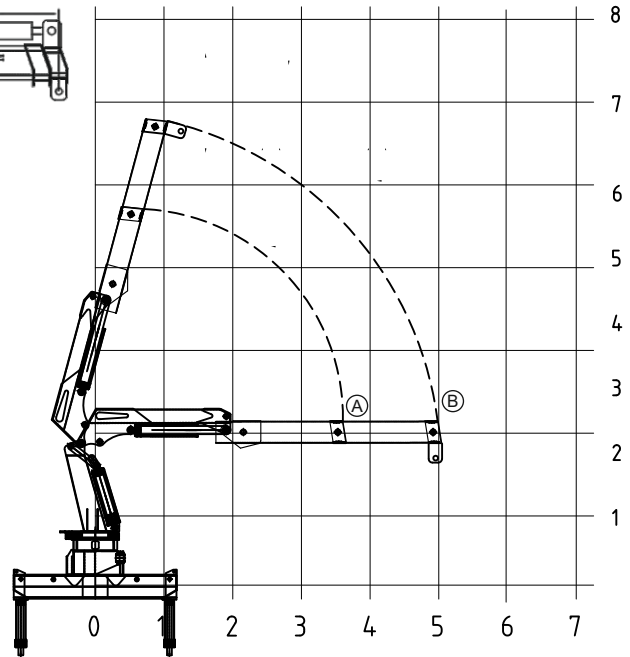
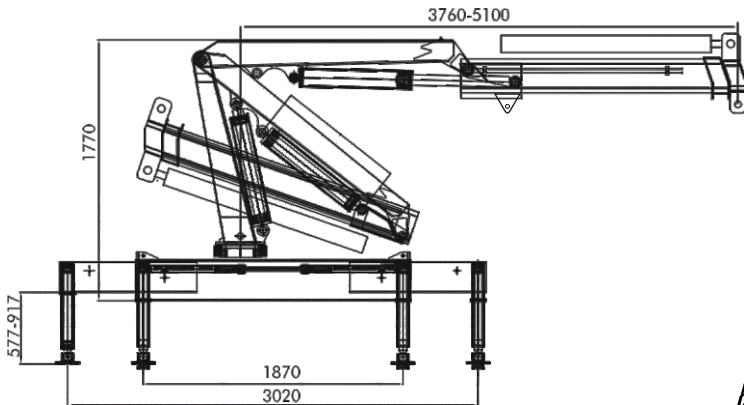


TRUCK MOUNTED KNUCKLE BOOM CRANES



DETAILS of KNUCKLE BOOM TRUCK MOUNTED CRANES

CCK 02E1

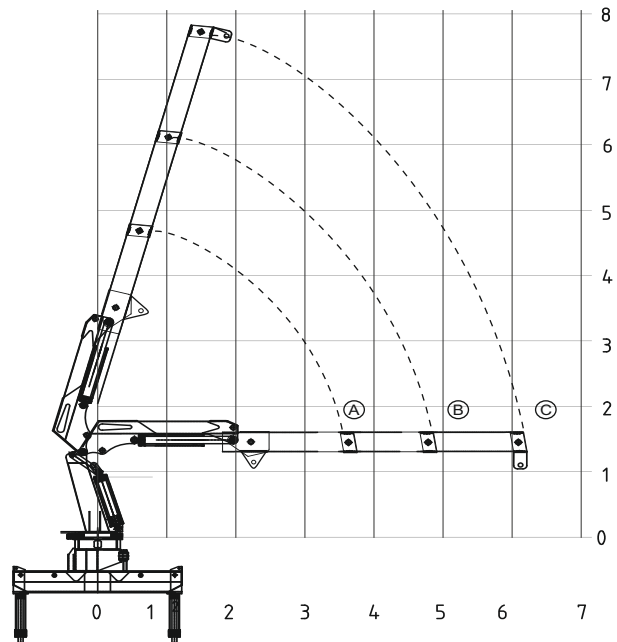
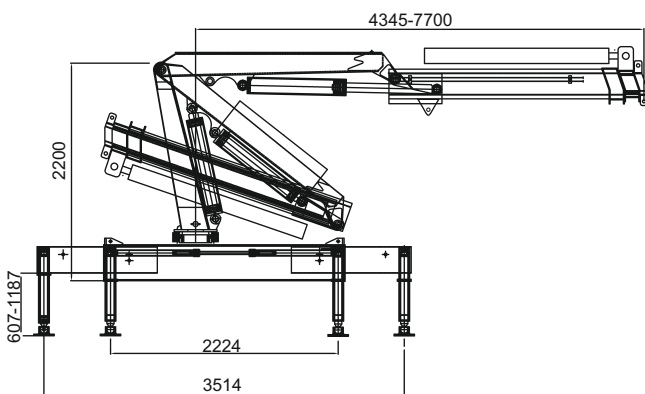


TECHNICAL SPECIFICATION

DESCRIPTION	UOM	CCK 02E1
Max Lifting Moment	T.M	4.2
Hydraulic System Flow	LPM	20
Hydraulic System Pressure	MPa	20
Oil Tank Capacity	L	40
Rotation	°	360° Cont.
Self Weight (Approx)	Kg	800
Installation Space	Cm	85

POSITION	A	B
RADIUS(M)	3.6	4.9
LIFTING CAPACITY-KG	1000	725

CCK 02E2



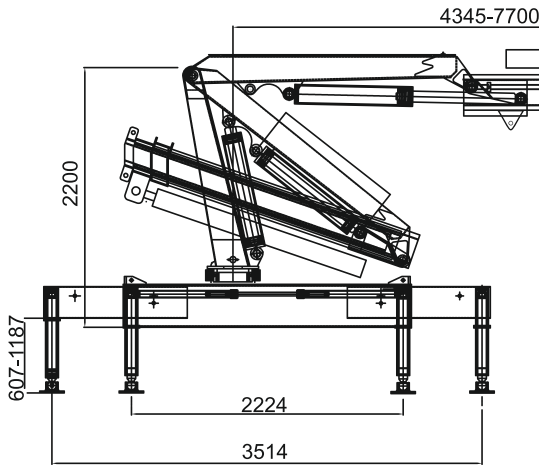
TECHNICAL SPECIFICATION

DESCRIPTION	UOM	CCK 02E2
Max Lifting Moment	T.M	4.2
Hydraulic System Flow	LPM	20
Hydraulic System Pressure	MPa	20
Oil Tank Capacity	L	40
Rotation	°	360° Cont.
Self Weight (Approx)	Kg	800
Installation Space	Cm	85

POSITION	A	B	C
RADIUS(M)	3.6	4.9	6.2
LIFTING CAPACITY-KG	980	700	500

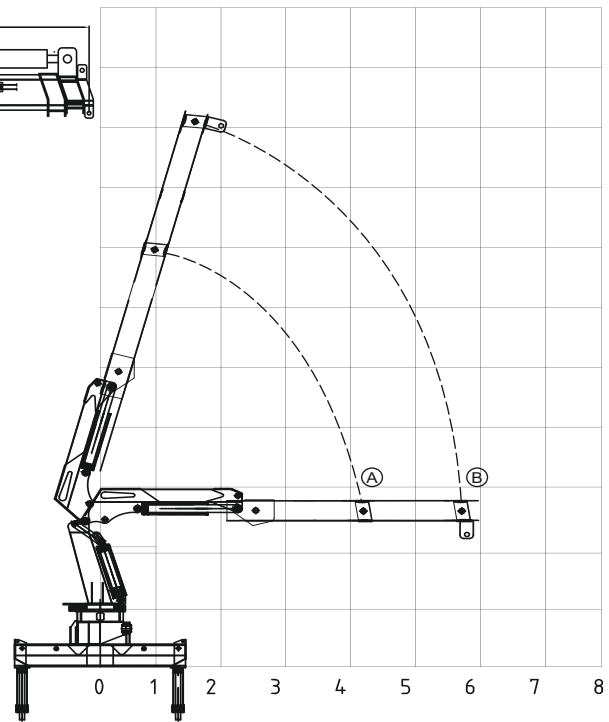
DETAILS of KNUCKLE BOOM TRUCK MOUNTED CRANES

CCK 04E1



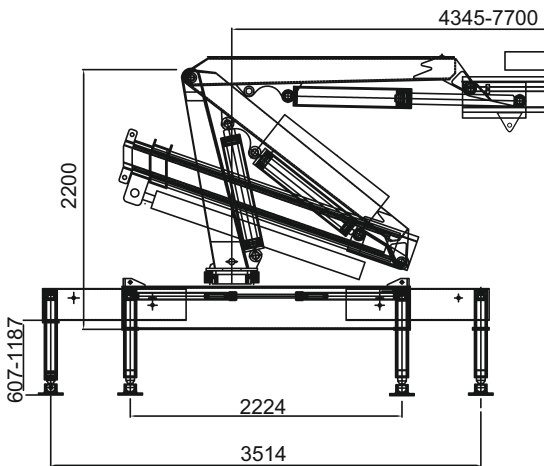
TECHNICAL SPECIFICATION

DESCRIPTION	UOM	CCK 04E1
Max Lifting Capacity	Kg	4000
Max Lifting Moment	T.M	8.4
Hydraulic System Flow	LPM	25
Hydraulic System Pressure	MPa	26
Oil Tank Capacity	L	60
Rotation	°	360° Cont.
Self Weight (Approx)	Kg	1250
Installation Space	Cm	85



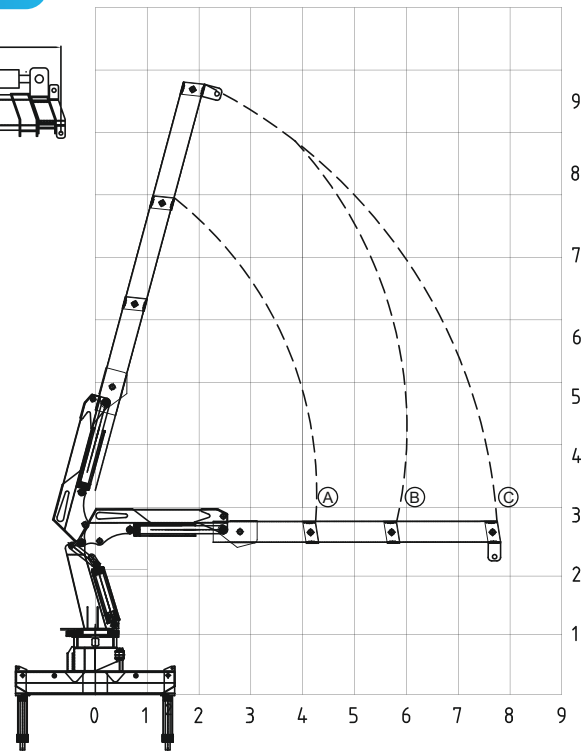
POSITION	A	B
RADIUS(M)	4.35	5.9
LIFTING CAPACITY-KG	1800	1300

CCK 04E2



TECHNICAL SPECIFICATION

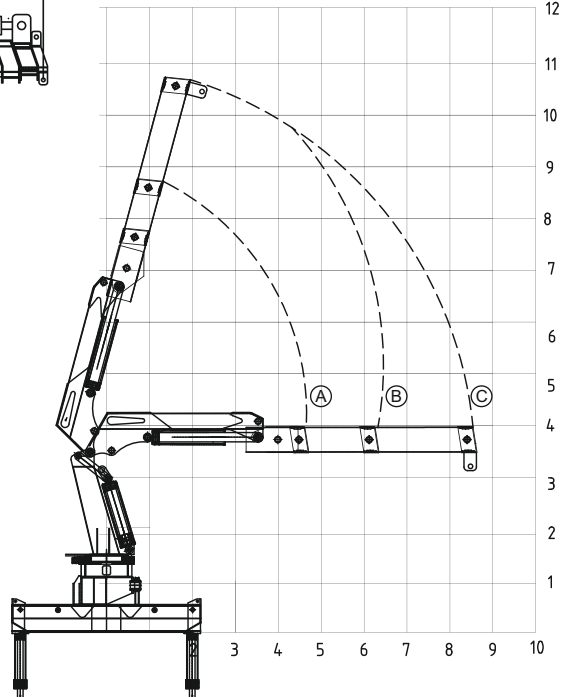
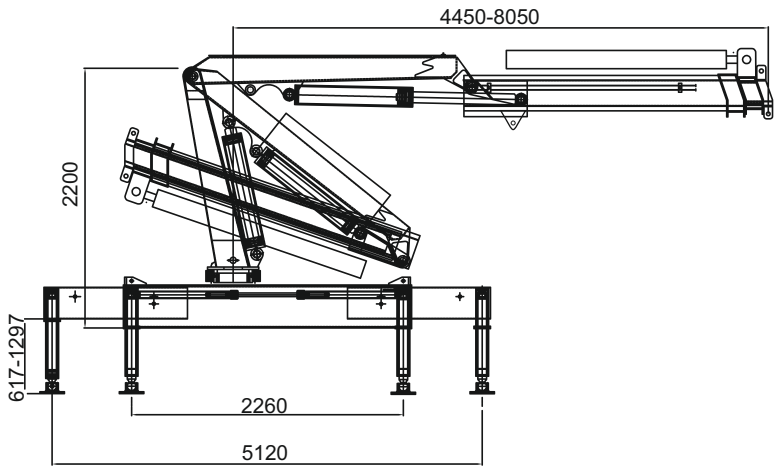
DESCRIPTION	UOM	CCK 04E2
Max Lifting Capacity	Kg	4000
Max Lifting Moment	T.M	8.4
Hydraulic System Flow	LPM	25
Hydraulic System Pressure	MPa	26
Oil Tank Capacity	L	60
Rotation	°	360° Cont.
Self Weight (Approx)	Kg	1250
Installation Space	Cm	85



POSITION	A	B	C
RADIUS(M)	4.35	5.9	7.7
LIFTING CAPACITY-KG	1800	1300	900

DETAILS OF KNUCKLE BOOM TRUCK MOUNTED CRANES

CCK 6.3E2

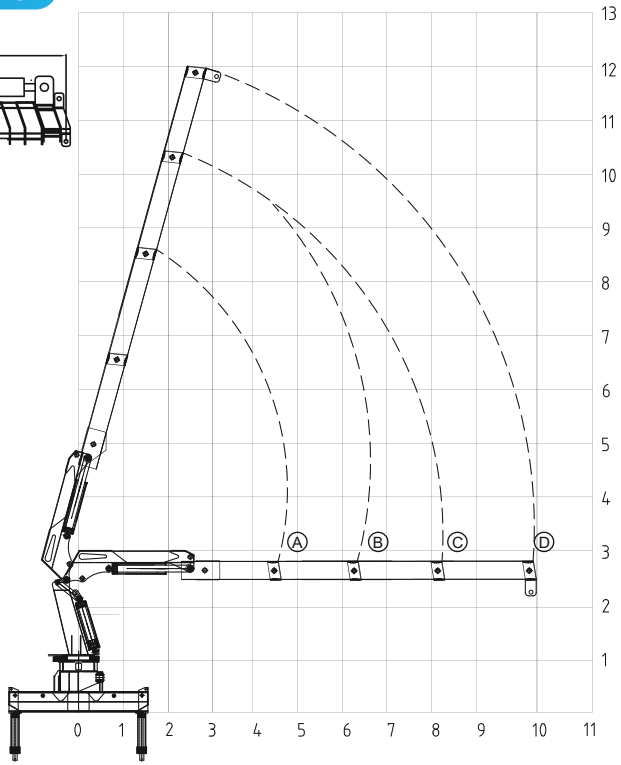
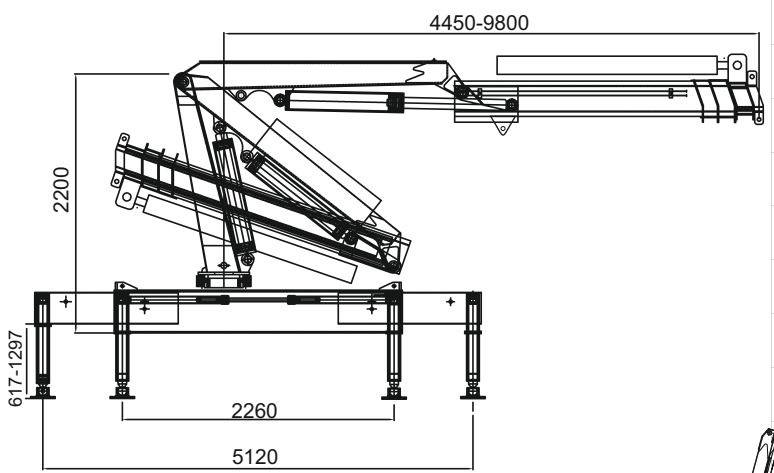


TECHNICAL SPECIFICATION

DESCRIPTION	UOM	CCK 6.3E2
Max Lifting Capacity	Kg	6300
Max Lifting Moment	T.M	13
Hydraulic System Flow	LPM	35
Hydraulic System Pressure	MPa	28
Oil Tank Capacity	L	100
Rotation	°	360° Cont.
Self Weight (Approx)	Kg	2050
Installation Space	Cm	105

POSITION	A	B	C
RADIUS(M)	4.45	6.20	8.05
LIFTING CAPACITY-KG	2800	1800	1500

CCK 6.3E3



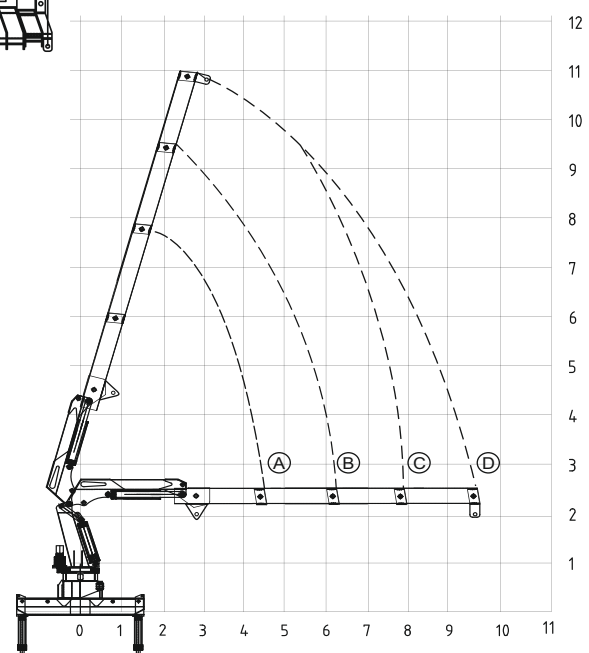
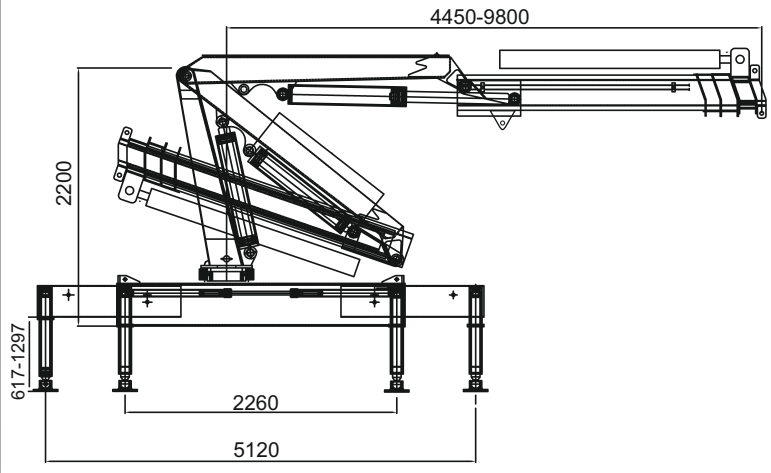
TECHNICAL SPECIFICATION

DESCRIPTION	UOM	CCK 6.3E3
Max Lifting Capacity	Kg	6300
Max Lifting Moment	T.M	13
Hydraulic System Flow	LPM	35
Hydraulic System Pressure	MPa	28
Oil Tank Capacity	L	100
Rotation	°	360° Cont.
Self Weight (Approx)	Kg	2200
Installation Space	Cm	105

POSITION	A	B	C	D
RADIUS(M)	4.45	6.20	8.05	9.8
LIFTING CAPACITY-KG	2700	1750	1500	1100

DETAILS OF KNUCKLE BOOM TRUCK MOUNTED CRANES

CCK 08E3

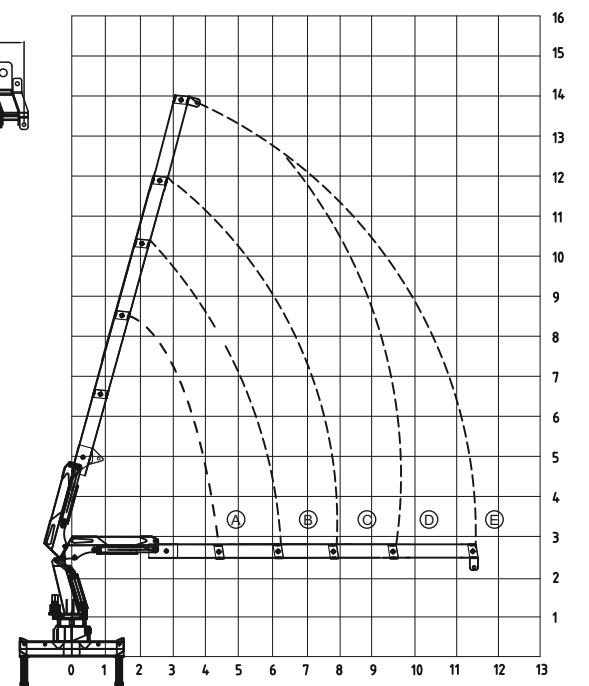
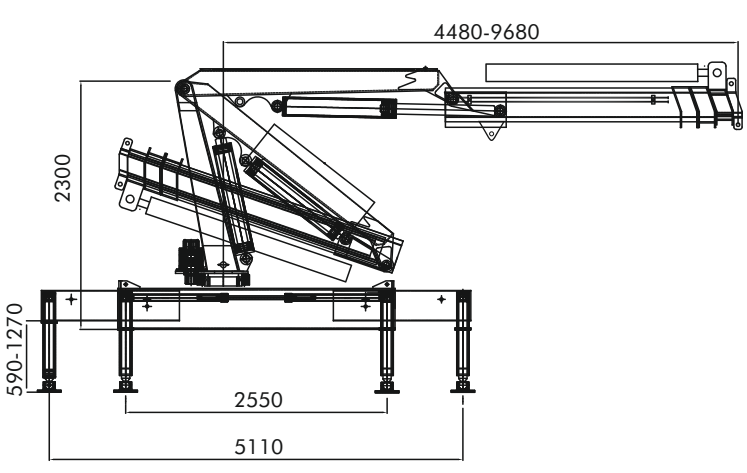


TECHNICAL SPECIFICATION

DESCRIPTION	UOM	CCE 8E3
Max Lifting Capacity	Kg	8000
Max Lifting Moment	T.M	16
Hydraulic System Flow	LPM	40
Hydraulic System Pressure	MPa	28
Oil Tank Capacity	L	160
Rotation	°	360° Cont.
Self Weight (Approx)	Kg	2850
Installation Space	Cm	115

POSITION	A	B	C	D
RADIUS(M)	4.48	6.18	7.93	9.68
LIFTING CAPACITY-KG	3500	2450	1900	1450

CCK 08E4



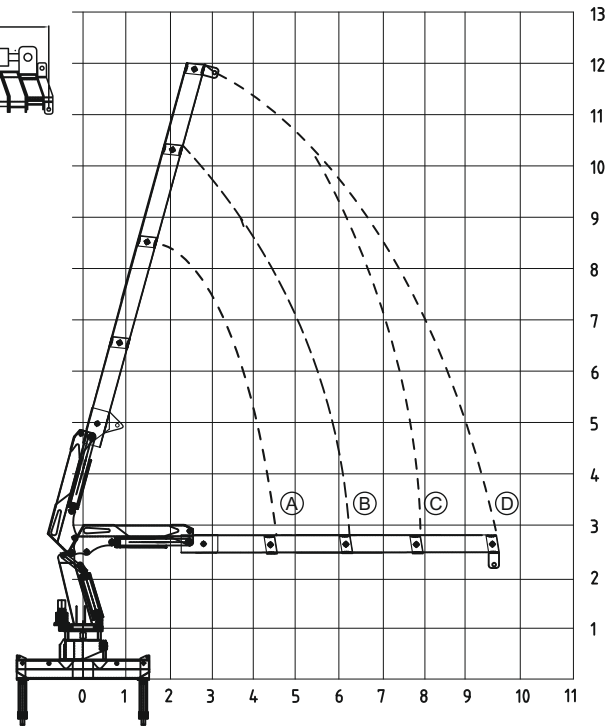
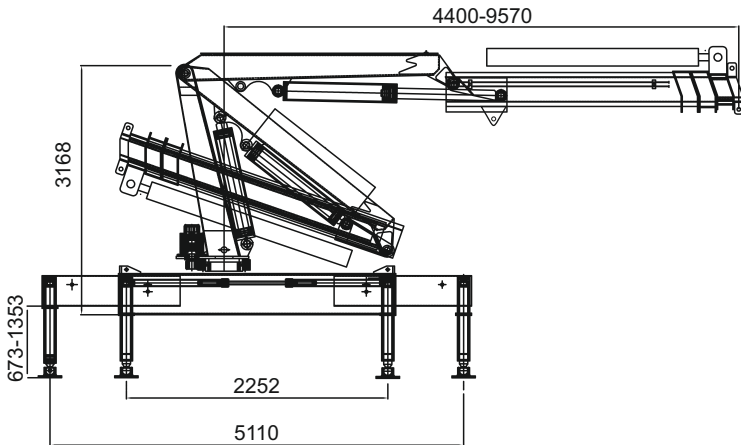
TECHNICAL SPECIFICATION

DESCRIPTION	UOM	CCE 8E3
Max Lifting Capacity	Kg	8000
Max Lifting Moment	T.M	16
Hydraulic System Flow	LPM	40
Hydraulic System Pressure	MPa	28
Oil Tank Capacity	L	160
Rotation	°	360° Cont.
Self Weight (Approx)	Kg	2850
Installation Space	Cm	115

POSITION	A	B	C	D	E
RADIUS(M)	4.48	6.18	7.93	9.68	11.38
LIFTING CAPACITY-KG	3500	2450	1900	1450	1100

DETAILS OF KNUCKLE BOOM TRUCK MOUNTED CRANES

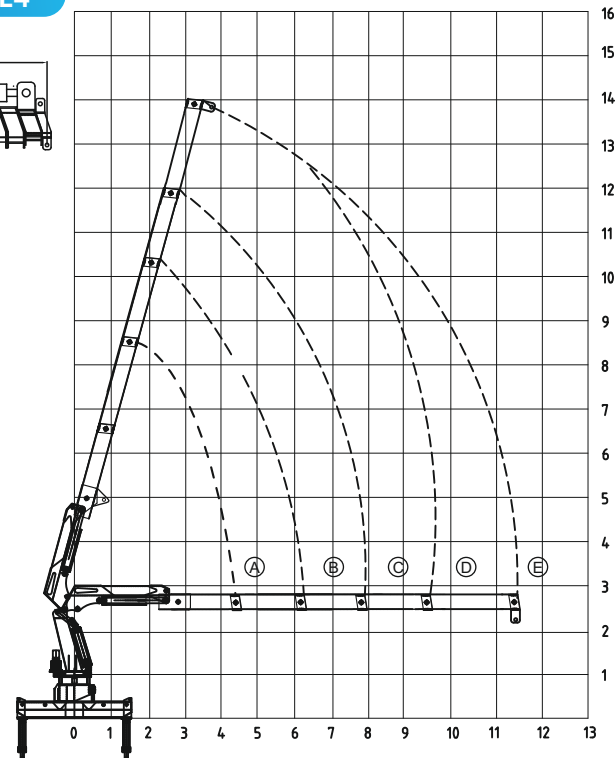
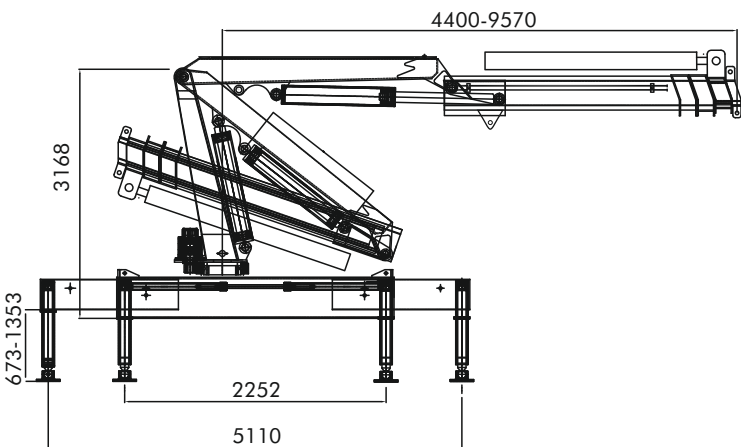
CCK 10E3



TECHNICAL SPECIFICATION		
DESCRIPTION	UOM	CCK 10E3
Max Lifting Capacity	Kg	10000
Max Lifting Moment	T.M	20
Hydraulic System Flow	LPM	40
Hydraulic System Pressure	MPa	28
Oil Tank Capacity	L	160
Rotation	°	360° Cont.
Self Weight (Approx)	Kg	3250
Installation Space	Cm	120

POSITION	A	B	C	D
RADIUS(M)	4.40	6.06	7.78	9.57
LIFTING CAPACITY-KG	4400	3270	2400	1800

CCK 10E4

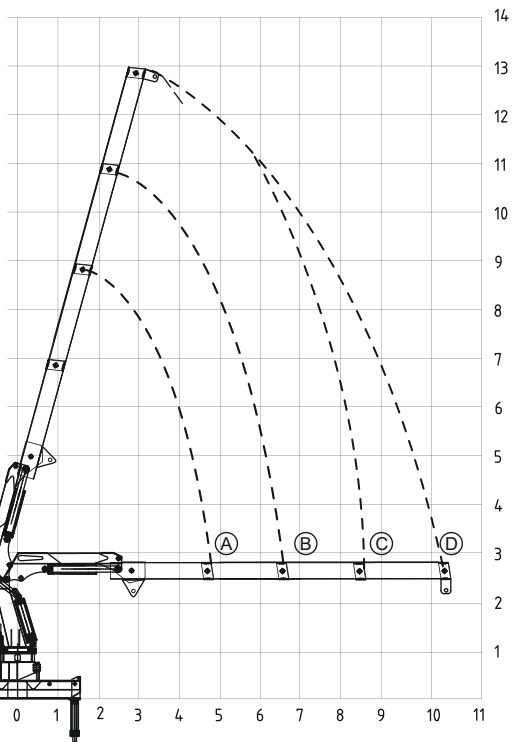
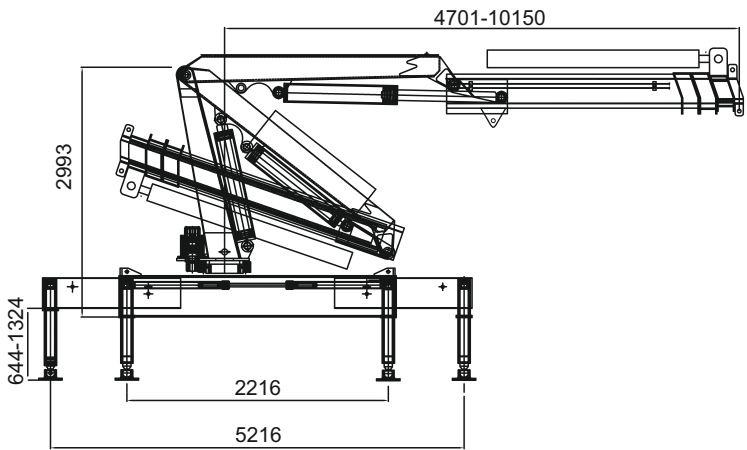


TECHNICAL SPECIFICATION		
DESCRIPTION	UOM	CCK 10E3
Max Lifting Capacity	Kg	10000
Max Lifting Moment	T.M	20
Hydraulic System Flow	LPM	40
Hydraulic System Pressure	MPa	28
Oil Tank Capacity	L	160
Rotation	°	360° Cont.
Self Weight (Approx)	Kg	3250
Installation Space	Cm	120

POSITION	B	C	D	E	F
RADIUS(M)	4.40	6.06	7.78	9.57	11.3
LIFTING CAPACITY-KG	4300	3270	2300	1600	1200

DETAILS OF KNUCKLE BOOM TRUCK MOUNTED CRANES

CCK 12E3

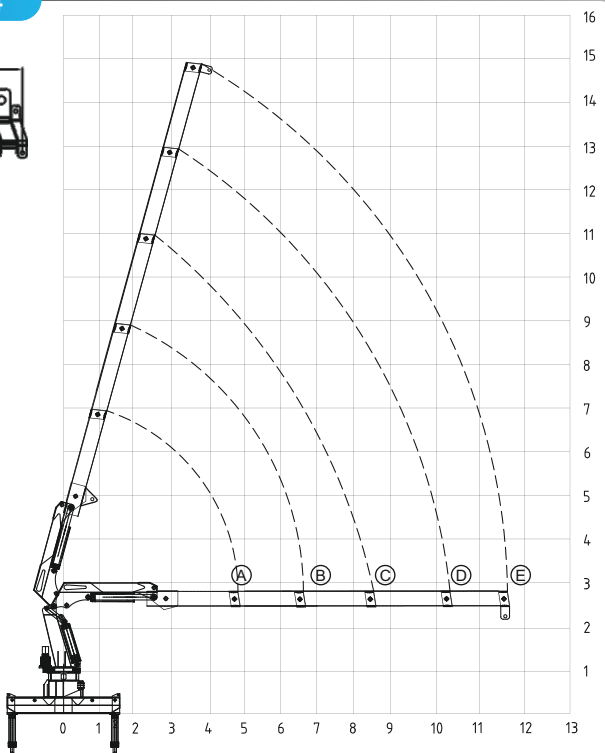
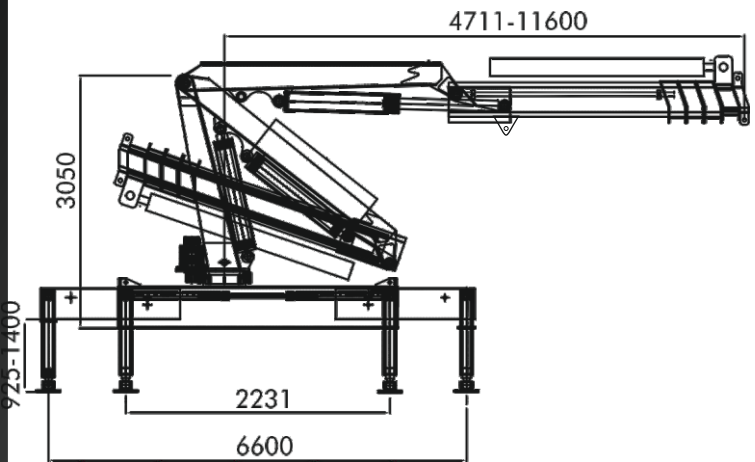


TECHNICAL SPECIFICATION

DESCRIPTION	UOM	CCE 12E3
Max Lifting Capacity	Kg	12000
Max Lifting Moment	T.M	27
Hydraulic System Flow	LPM	55
Hydraulic System Pressure	MPa	28
Oil Tank Capacity	L	160
Rotation	°	360° Cont.
Self Weight (Approx)	Kg	3950
Installation Space	Cm	140

POSITION	A	B	C	D
RADIUS(M)	4.70	6.45	8.30	10.15
LIFTING CAPACITY-KG	5700	3750	2750	2100

CCK 16E4



TECHNICAL SPECIFICATION

DESCRIPTION	UOM	CCE 16E4
Max Lifting Capacity	Kg	16000
Max Lifting Moment	T.M	40
Hydraulic System Flow	LPM	63
Hydraulic System Pressure	MPa	30
Oil Tank Capacity	L	240
Rotation	°	360° Cont.
Self Weight (Approx)	Kg	5000
Installation Space	Cm	150

POSITION	A	B	C	D	E
RADIUS(M)	4.74	6.54	8.39	10.30	11.60
LIFTING CAPACITY-KG	6600	5100	2900	2400	2100

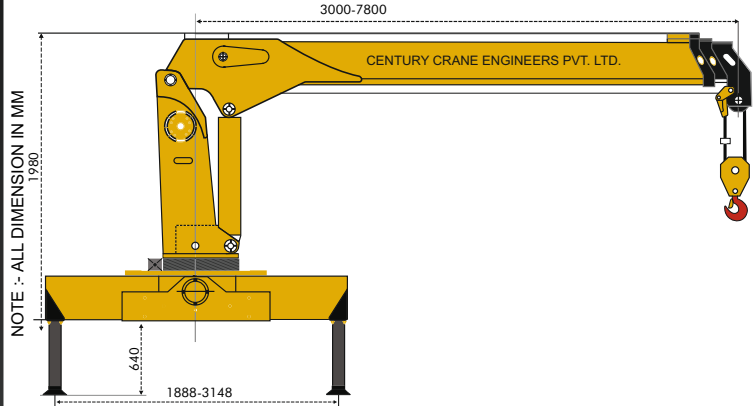


STRAIGHT BOOM TRUCK MOUNTED CRANES



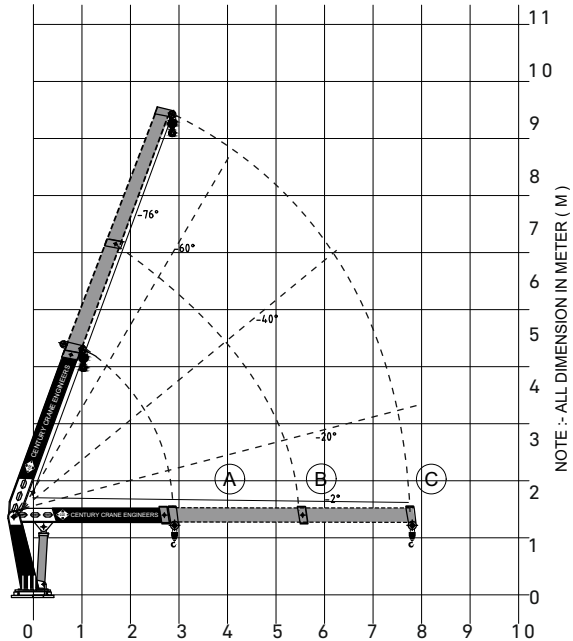
DETAILS of STRAIGHT BOOM TRUCK MOUNTED CRANES

CCT 2 E2



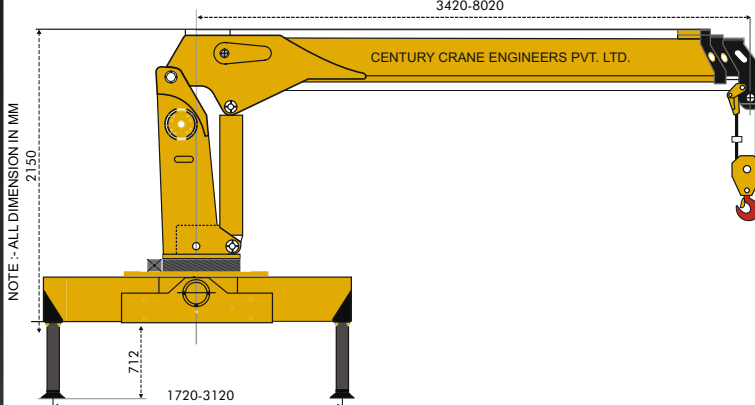
TECHNICAL SPECIFICATION

DESCRIPTION	UOM	CCT 2 E2
Max Lifting Capacity	Kg	2000
Max Lifting Moment	T.M	4.2
Hydraulic System Flow	LPM	20
Hydraulic System Pressure	MPa	16
Oil Tank Capacity	L	35
Rotation	°	360° Cont.
Self Weight (Approx)	Kg	620
Installation Space	Cm	65



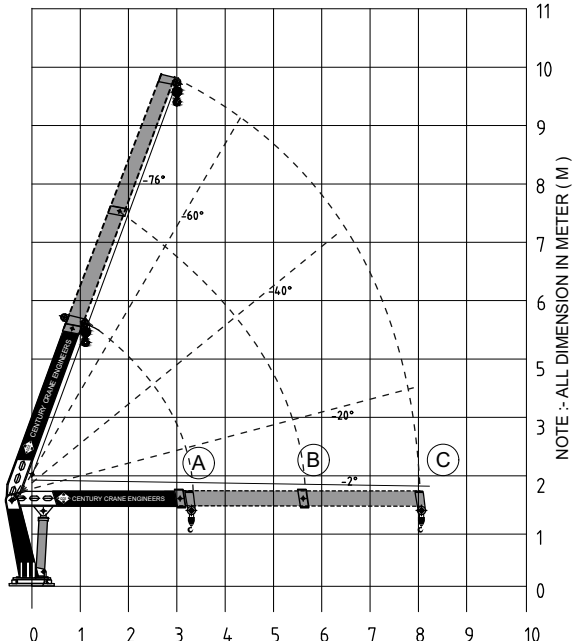
POSITION	A	B	C
RADIUS(M)	3.0	5.4	7.8
LIFTING CAPACITY-KG	1100	600	350

CCT 04 E2



TECHNICAL SPECIFICATION

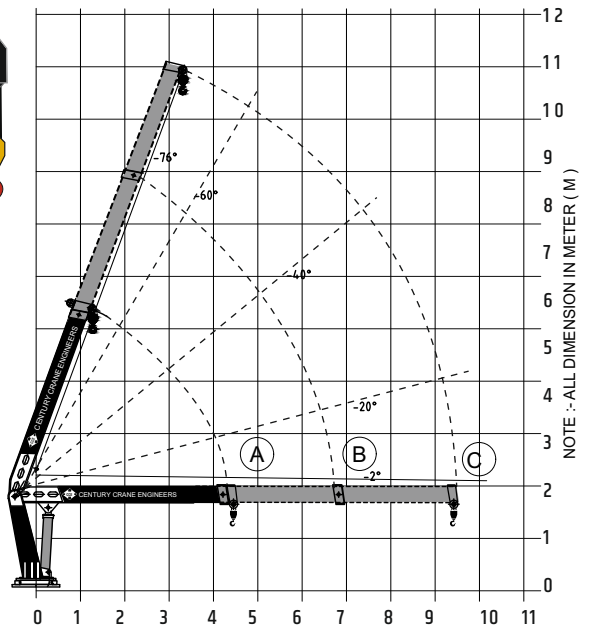
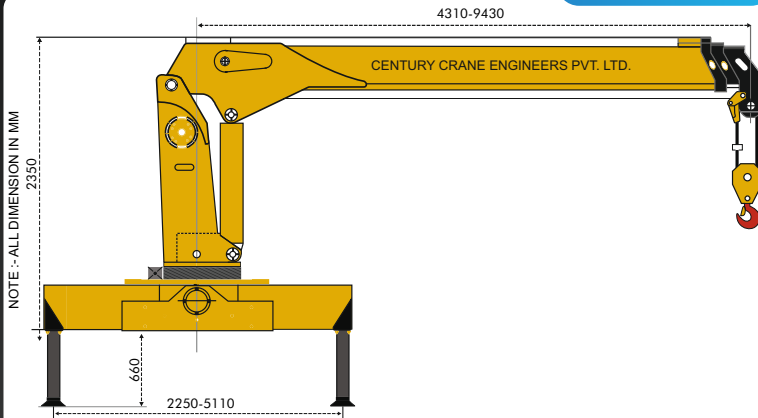
DESCRIPTION	UOM	CCT 04 E2
Max Lifting Capacity	Kg	4000
Max Lifting Moment	T.M	8.4
Hydraulic System Flow	LPM	25
Hydraulic System Pressure	MPa	20
Oil Tank Capacity	L	60
Rotation	°	360°Conti.
Self Weight (Approx)	Kg	1250
Installation Space	Cm	75



POSITION	A	B	C
RADIUS(M)	3.4	5.7	8.0
LIFTING CAPACITY-KG	2280	1180	800

DETAILS of STRAIGHT BOOM TRUCK MOUNTED CRANES

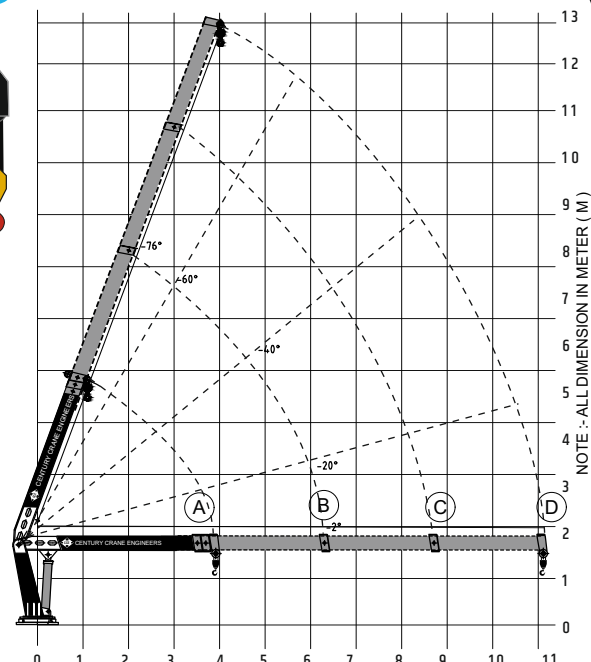
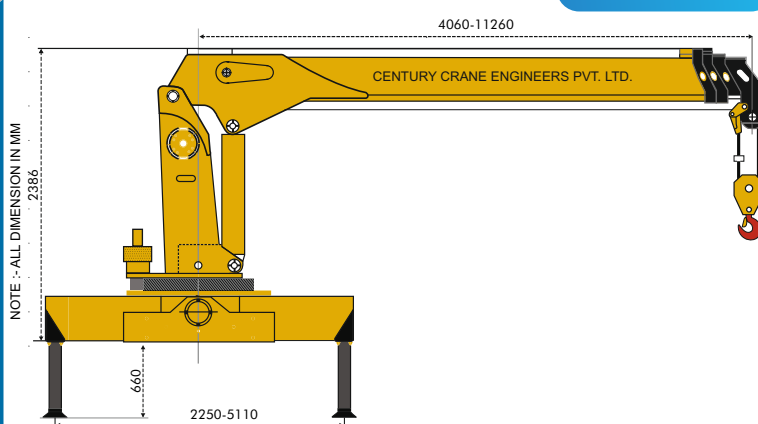
CCT 6.3 E2



TECHNICAL SPECIFICATION		
DESCRIPTION	UOM	CCT 6.3 E2
Max Lifting Capacity	Kg	6300
Max Lifting Moment	T.M	13
Hydraulic System Flow	LPM	40
Hydraulic System Pressure	MPa	20
Oil Tank Capacity	L	100
Rotation	°	360°Conti.
Self Weight (Approx)	Kg	2150
Installation Space	Cm	90

POSITION	A	B	C
RADIUS(M)	4.3	6.8	9.4
LIFTING CAPACITY-KG	3450	1950	1350

CCT 6.3 E3

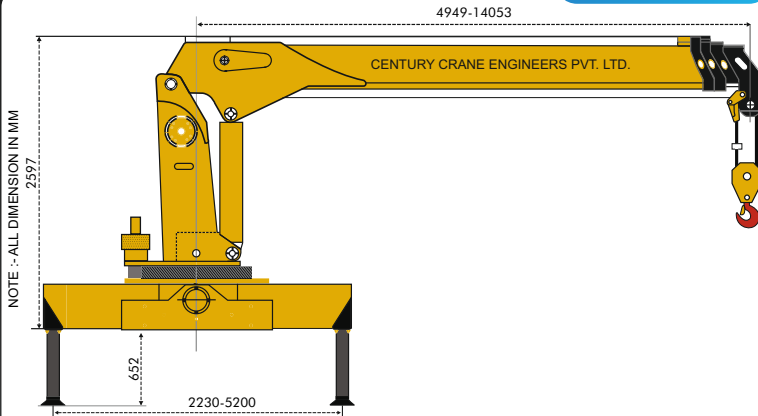


TECHNICAL SPECIFICATION		
DESCRIPTION	UOM	CCT 6.3 E3
Max Lifting Capacity	Kg	6300
Max Lifting Moment	T.M	13
Hydraulic System Flow	LPM	40
Hydraulic System Pressure	MPa	20
Oil Tank Capacity	L	100
Rotation	°	360°Conti.
Self Weight (Approx)	Kg	2250
Installation Space	Cm	90

POSITION	A	B	C	D
RADIUS(M)	4.0	6.4	8.8	11.2
LIFTING CAPACITY-KG	3000	1800	1200	800

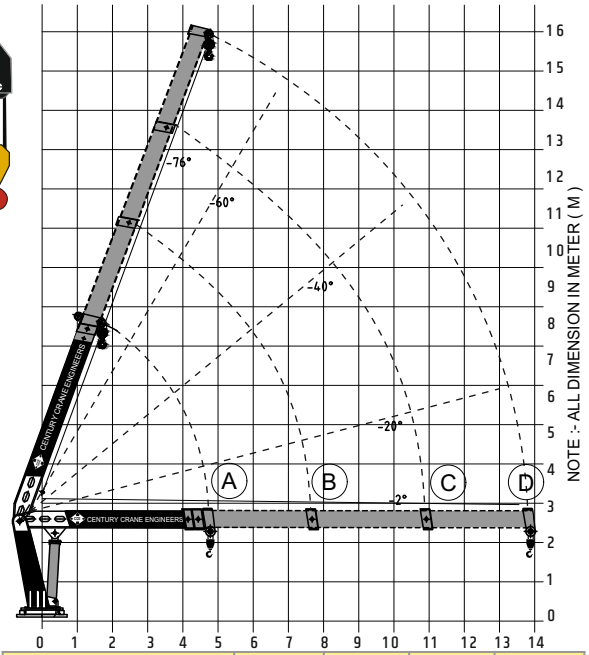
DETAILS of STRAIGHT BOOM TRUCK MOUNTED CRANES

CCT 08 E3



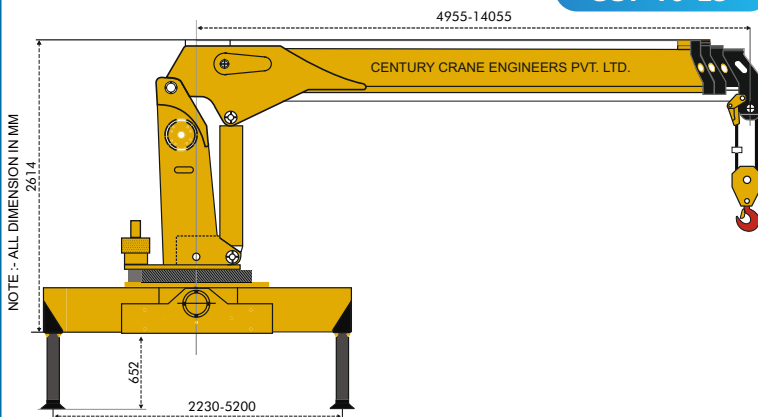
TECHNICAL SPECIFICATION

DESCRIPTION	UOM	CCT 08 E3
Max Lifting Capacity	Kg	8000
Max Lifting Moment	T.M	20
Hydraulic System Flow	LPM	55
Hydraulic System Pressure	MPa	24
Oil Tank Capacity	L	160
Rotation	°	360°Conti.
Self Weight (Approx)	Kg	3250
Installation Space	Cm	120



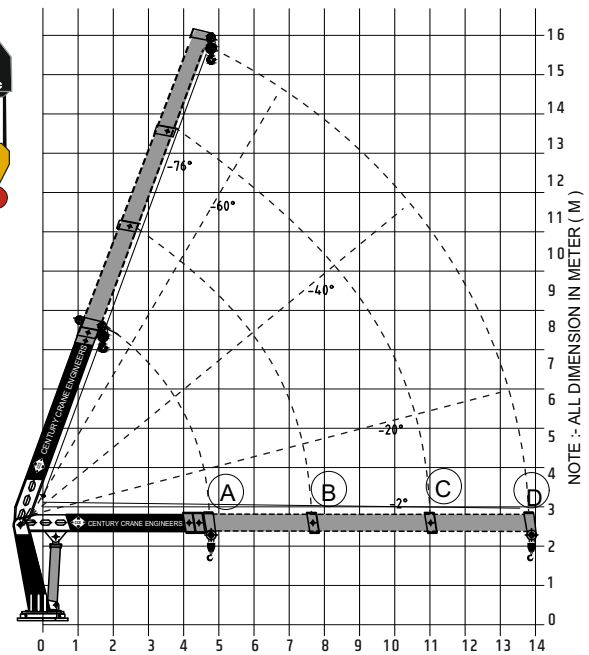
POSITION	A	B	C	D
RADIUS(M)	4.9	7.9	11.0	14.0
LIFTING CAPACITY-KG	4000	2250	1500	1100

CCT 10 E3



TECHNICAL SPECIFICATION

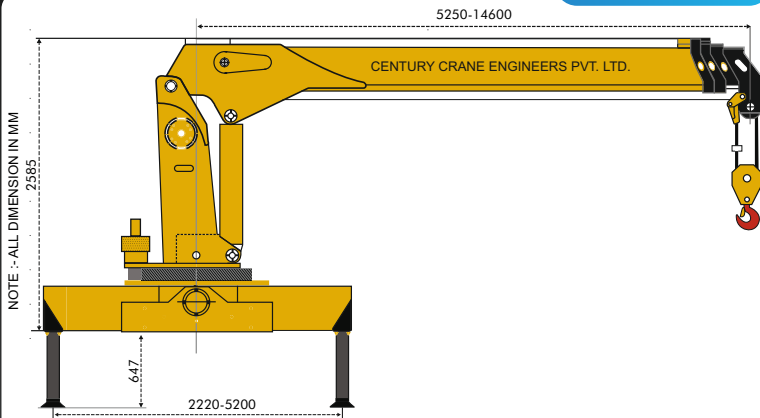
DESCRIPTION	UOM	CCT 10 E3
Max Lifting Capacity	Kg	10000
Max Lifting Moment	T.M	25
Hydraulic System Flow	LPM	63
Hydraulic System Pressure	MPa	25
Oil Tank Capacity	L	160
Rotation	°	360°Conti.
Self Weight (Approx)	Kg	3650
Installation Space	Cm	120



POSITION	A	B	C	D
RADIUS(M)	4.9	7.9	11.0	14.0
LIFTING CAPACITY-KG	5000	2900	2100	1500

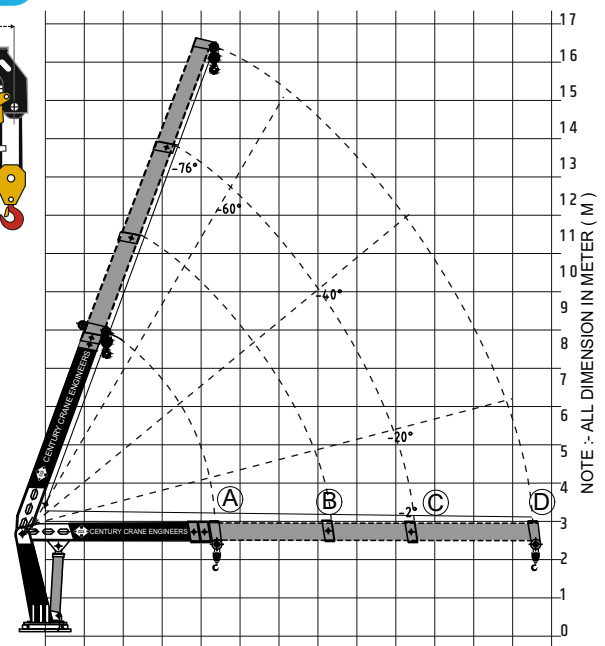
DETAILS of STRAIGHT BOOM TRUCK MOUNTED CRANES

CCT 12 E3



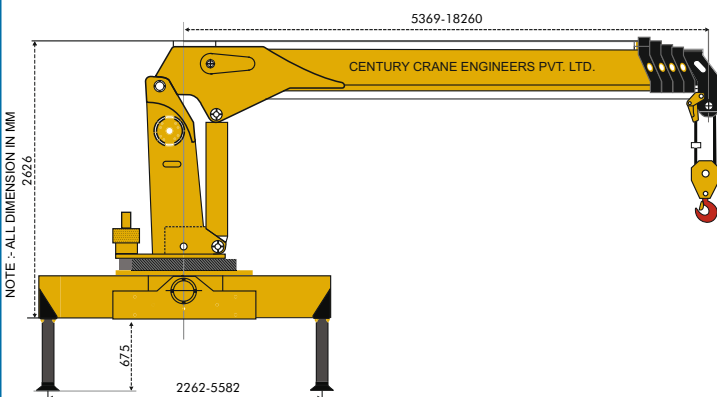
TECHNICAL SPECIFICATION

DESCRIPTION	UOM	CCT 12 E3
Max Lifting Capacity	Kg	12000
Max Lifting Moment	T.M	30
Hydraulic System Flow	LPM	63
Hydraulic System Pressure	MPa	26
Oil Tank Capacity	L	160
Rotation	°	360°Conti.
Self Weight (Approx)	Kg	4250
Installation Space	Cm	130



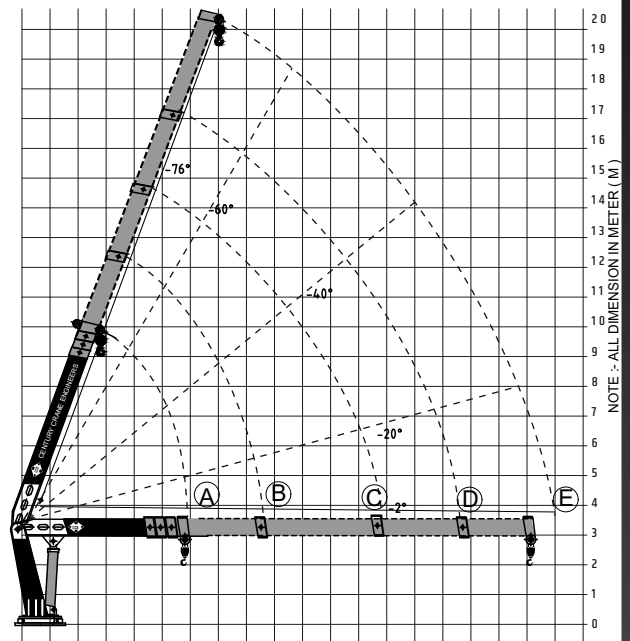
POSITION	A	B	C	D
RADIUS(M)	5.2	8.3	11.4	14.6
LIFTING CAPACITY-KG	5700	3300	2200	1800

CCT 12 E4



TECHNICAL SPECIFICATION

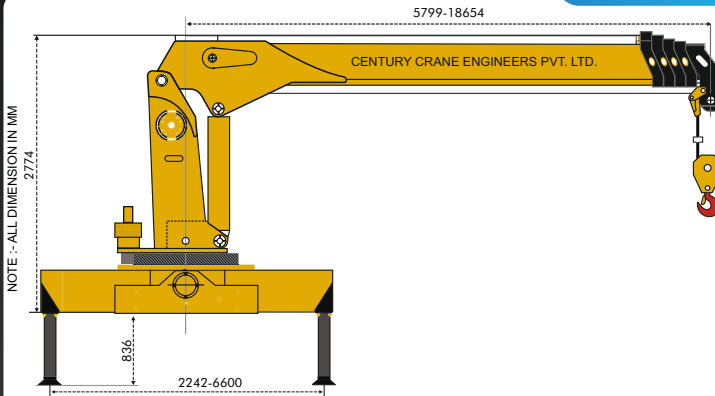
DESCRIPTION	UOM	CCT 12 E4
Max Lifting Capacity	Kg	12000
Max Lifting Moment	T.M	30
Hydraulic System Flow	LPM	63
Hydraulic System Pressure	MPa	26
Oil Tank Capacity	L	160
Rotation	°	360°Conti.
Self Weight (Approx)	Kg	4550
Installation Space	Cm	130



POSITION	A	B	C	D	E
RADIUS(M)	5.3	8.5	11.7	15.0	18.2
LIFTING CAPTY.-KG	5300	3150	2300	1600	1100

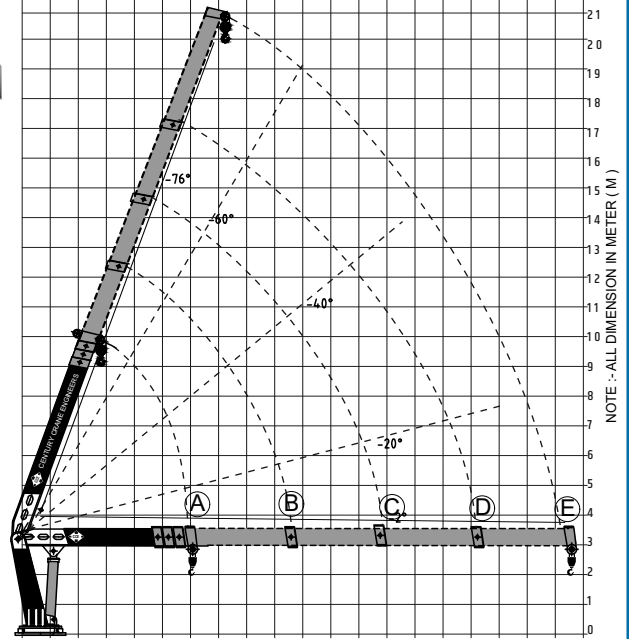
DETAILS of STRAIGHT BOOM TRUCK MOUNTED CRANES

CCT 16 E4



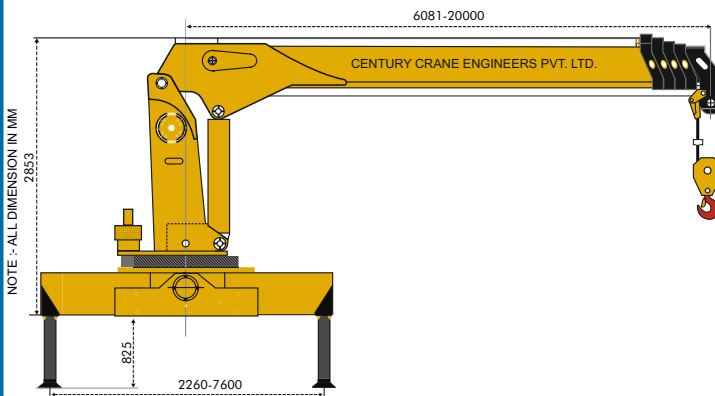
TECHNICAL SPECIFICATION

DESCRIPTION	UOM	CCT 16 E4
Max Lifting Capacity	Kg	16000
Max Lifting Moment	T.M	50
Hydraulic System Flow	LPM	80
Hydraulic System Pressure	MPa	28
Oil Tank Capacity	L	240
Rotation	°	360°Conti.
Self Weight (Approx)	Kg	6000
Installation Space	Cm	140



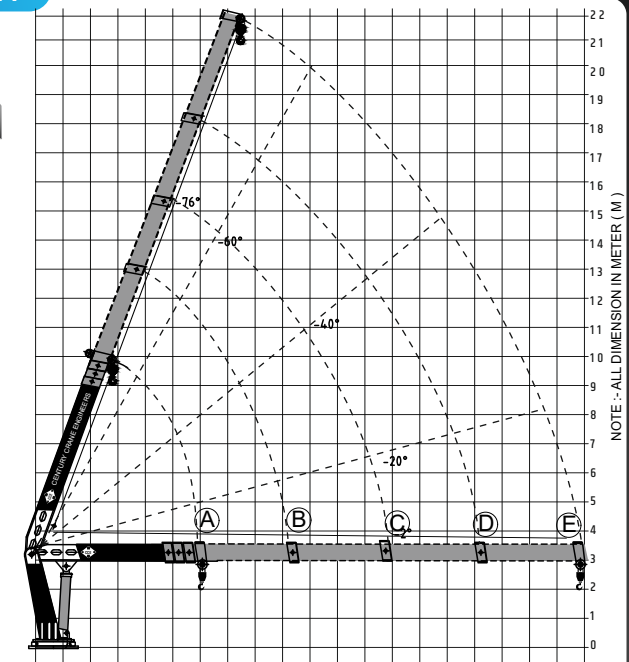
POSITION	A	B	C	D	E
RADIUS(M)	5.8	8.9	12.2	15.4	18.6
LIFTING CAPTY.-KG	7500	4800	3200	2500	1900

CCT 20 E4



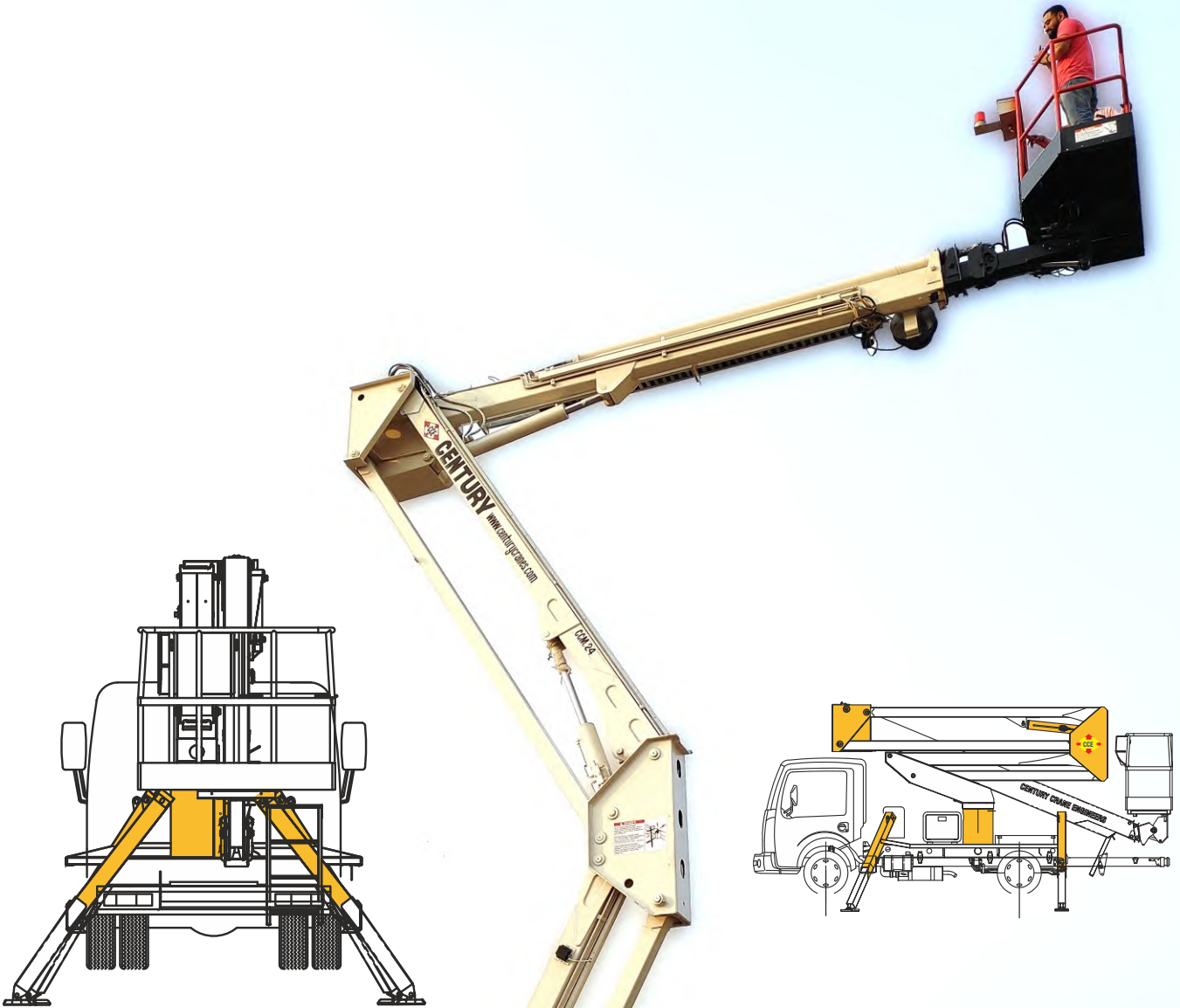
TECHNICAL SPECIFICATION

DESCRIPTION	UOM	CCT 20 E4
Max Lifting Capacity	Kg	20000
Max Lifting Moment	T.M	50
Hydraulic System Flow	LPM	120
Hydraulic System Pressure	MPa	26
Oil Tank Capacity	L	260
Rotation	°	360°Conti.
Self Weight (Approx)	Kg	7140
Installation Space	Cm	145



POSITION	A	B	C	D	E
RADIUS(M)	6.0	9.5	13.0	16.5	20.0
LIFTING CAPTY.-KG	7700	4600	3450	2600	1900

Ariel Work Platform



ARIEL WORK PLATFORM





WWW.CENTURYCRANES.COM

CENTURY

HYDRAULIC TANK

CAUTION

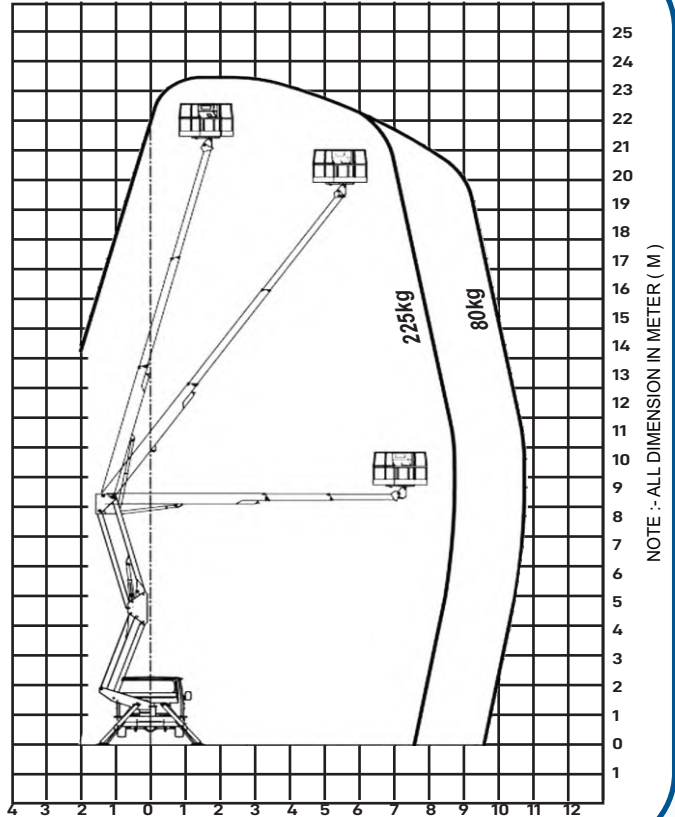
3

1

ARIEL WORK PLATFORM

CCL-24M

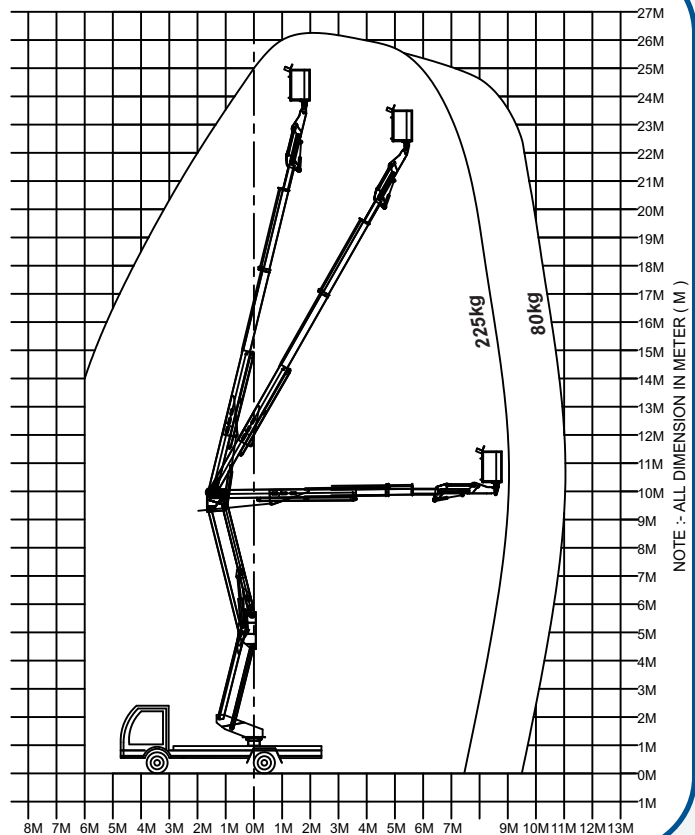
Operating Height	24 M
Bucket Bottom (From Ground)	21.70 M
Max Capacity	225 Kg
SAFETY FEATURES	
Control	Thru Lever
Bucket Rotation	± 90 Degree
Base Rotation	360 Degree - Cont
Bucket Material	Aluminium + Steel
Bucket Dimension (mm)	1400 X 700 X 1100



NOTE :- ALL DIMENSION IN METER (M)

CCL-26M

Operating Height	26 M
Bucket Bottom (From Ground)	23.70 M
Max Capacity	225 Kg
SAFETY FEATURES	
Control	Thru Lever
Bucket Rotation	± 90 Degree
Base Rotation	360 Degree - Cont
Bucket Material	Aluminium + Steel
Bucket Dimension (mm)	1400 X 700 X 1100



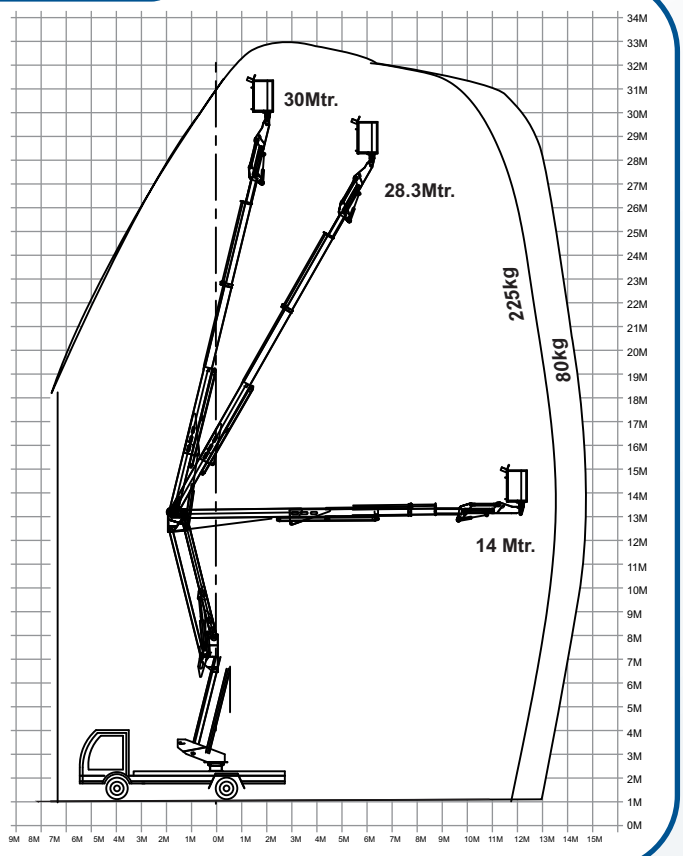
NOTE :- ALL DIMENSION IN METER (M)

ARIEL WORK PLATFORM

CCL-30M

Operating Height	30 M
Bucket Bottom (From Ground)	28.3 M
Max Capacity	225 Kg
Control	Thru Lever
Bucket Rotation	± 90 Degree
Base Rotation	360 Degree - Cont
Bucket Material	Aluminium + Steel
Bucket Dimension (mm)	1400 X 700 X 1100

SAFETY FEATURES	
Manual Hand Pump for Emergency	
Load Cell Indicator	
Level Indicator	
Interlocking between Leg and Boom	
Leg Deployment Indicator	



H-Type Outrigger



Electronic Level Indicator

Other Safety Features

- Audio Level Indicator
- Emergency Manual Hand Pump
- Boom V/S Selector for outrigger



Emergency Stop in Bucket

TRACTOR MOUNTED STRAIGHT CRANE



TRACTOR MOUNTED STRAIGHT BOOM CRANE



TRACTOR MOUNTED STRAIGHT BOOM CRANE



TRACTOR MOUNTED KNUCKLE BOOM CRANE

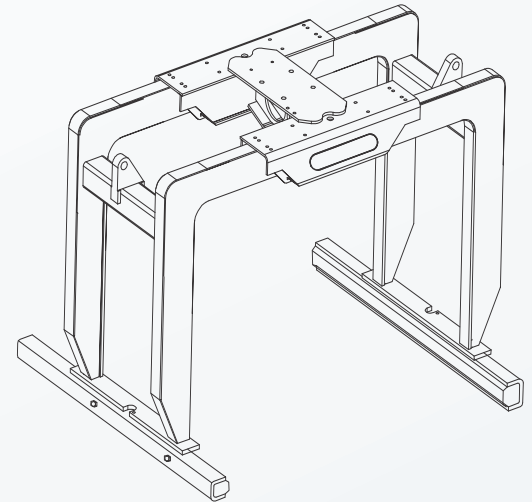
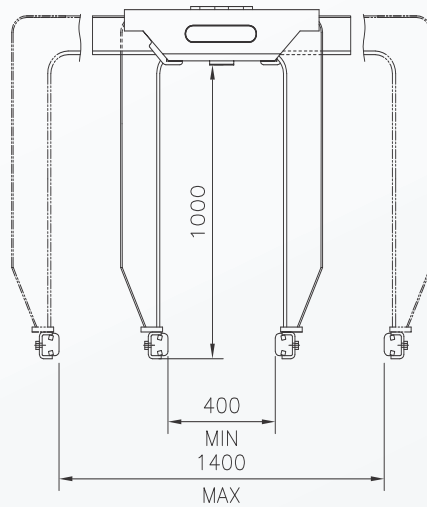
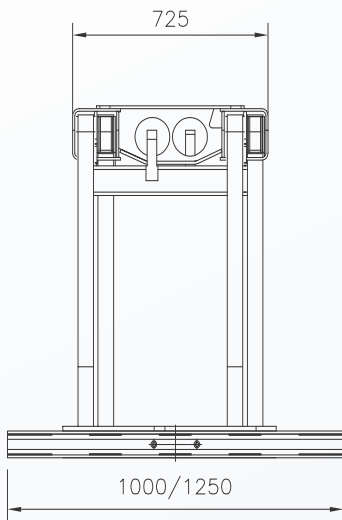


TRACTOR MOUNTED KNUCKLE BOOM CRANE



TECHNICAL BRICK GRABBER SPECIFICATIONS

Type	Plunge depth (mm)	Load capacity at min./max. plunge depth (kg)	Gripping min./max. (mm)	Height with rotator (mm)	Self weight (kg)
CCBG550	711	550	212-654	871	154
CCBG1000	957	1000	357-1256	1169	365
CCBG1500	1170	1500	460-1200	1370	610



TRUCK CRANE REQUIREMENTS

Operating pressure: 200 – 320 bar
 Pump capacity: 25 – 75 l/min
 Two hydraulic functions on the crane

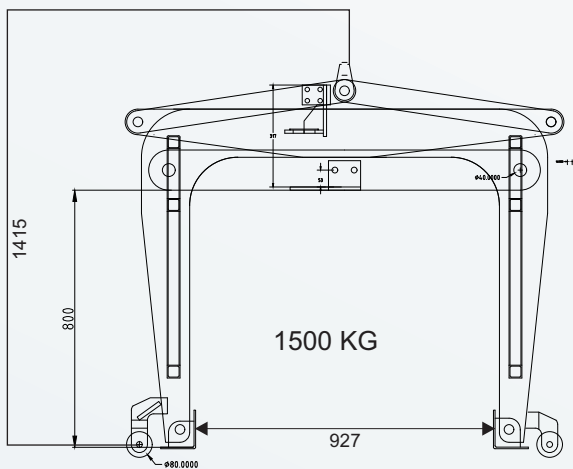
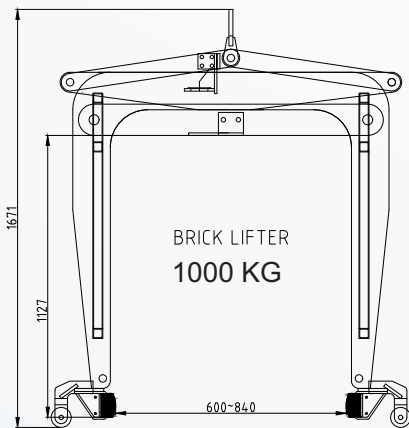


TECHNICAL BRICK GRABBER

- The technically advanced brick stack grapple is extremely versatile for palletised and non-palletised building material
- Simple and safe method of operation because of the synchronised function of the clamping arms and the integrated pressure relief valve
- Long service life thanks to the generously dimensioned bearing system
- High efficiency due to the versatile settings for depth and width

MECHANICAL BRIG GRABBER SPECIFICATIONS

Type	Plunge Depth (mm) (A)	Load Capacity (kg)	Gripping (mm) (B)		Height (mm) (C)	Self Weight (kg)	Compression Rail Length (D)
			Min	Max			
Model 1	850	1000	600	- 900	1444	325	1200
Model 2	1130	1500	600	- 900	1640	385	1200



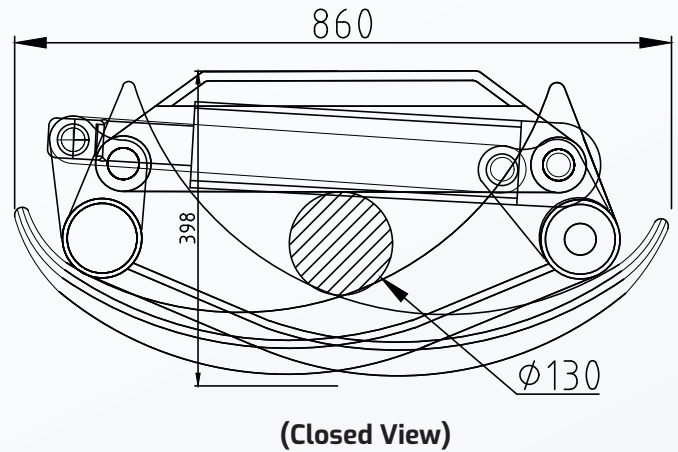
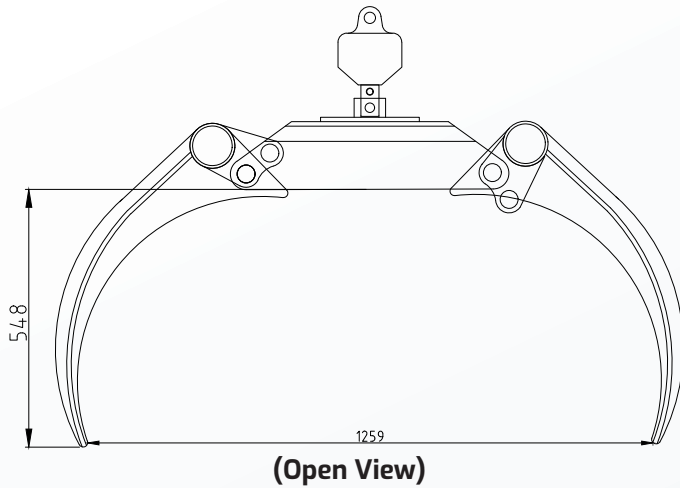
TRUCK CRANE REQUIREMENTS

Operating pressure: 200 – 320 bar
 Pump capacity: 25 – 75 l/min
 Two hydraulic functions on the crane

MECHANICAL BRICK GRABBER

- ◆ Design for lift bunch of bricks, brick block and bunch of road pavement tiles
- ◆ Reduce labour requirement.
- ◆ Minimal maintenance required.
- ◆ Simple and safe operation mechanism.
- ◆ High quality automatic locking mechanism ensures the independent grabbing mechanism work synchronously.
- ◆ The Grabber fitted with interchangeable rubber pads to reduce slippage risk.

SUGARCANE GRABBER



Model Number	Installed On	Payload Capacity
CCW-5000-T	Truck/Tractor	400 Kg @ 5 M
CCW-6000-T	Truck/Tractor	500 Kg @ 6 M
CCW-6000-F	Floor	500 Kg @ 6 M

Required Vehicle

DESCRIPTION	SPECIFICATION
Power Pack	15 HP Min
Tractor	50 HP Min



OUR CLIENTS

Power

- Adani Power
- Angelique International Limited
- Areva
- Avantha Power
- Bevcon
- BGR
- BHEL
- DB Power
- Encon Thermal
- Energo
- Jindal Power
- Khari Power Project Private Limited
- L&T
- Lanco
- Mecawar Beekay
- Melco
- Mitsubishi Heavy Industries Ltd
- Noida Power Corporation
- NTPC
- Rajwest Power
- Reliance Power
- Tata Power
- Toshiba

HYDRO

- Andritz
- Boom
- Coastal Energy
- Flovel
- Greenko
- Hydro Power Corporation
- Irrigation Department
- Neon Energy
- NHPC
- Toshiba Plant Systems & Services Corporation (TPSC)
- Voith

CEMENT INDUSTRY

- ABG Cement
- ACC Cement
- Arhhakanchi Cement (P) Ltd.
- Beumer Group
- Binani Cement
- FL Smidth
- GEBR
- Heidelberg Cement
- JP Sindhi Cement
- Malabar Cement
- Meghalay Cement
- Ultra tech Cement
- Vasavadutta Cement
- Zuari Cement

STEEL

- Avon Tubech
- BEC
- Beekay Engineering
- Bhilai Steel Plant
- Bhushan Steel Limited
- Bokaro Steel Plant
- Danielli India Limited

- Dev Energy
- EPI
- Essar Steels India Limited
- HEC Ltd
- HN Singh Construction Pvt Ltd
- IISCO Burnpur
- International Steel Services
- JSPL
- JSW
- Jyotindra Steel and Tubes
- L&T -MMH
- Magnum Steel
- NMDC
- Posco
- PP Rolling
- Preet Machines
- Rourkela Steel Plant
- Samsung
- Siemens Vai (Prime Metals)
- SMS Meer
- Tata Steel Water Divison Jusco
- Vizag Steel

AUTO INDUSTRY

- ACE
- Allena Auto
- BEML
- Escorts
- Euro Bearing
- Hema
- Indo Auto Tech Limited
- Jaycee Auto
- JBM
- Linde India Ltd.
- Mahindra
- Motherson
- Mushasi Auto
- PPAP
- RICO Auto
- Roop Automotives Ltd.
- Wahi Sons
- Yamaha
- Yuken India

PAPER INDUSTRY

- Akula Paper Board
- Bhagwati Kripa Paper Mills
- Everest Paper Mills
- Krofta Paper
- Kumar Printers
- Paper Products Limited
- Sree Chakra

RUBBER INDUSTRY

- ATC Tyres
- Balakrishna Tyres
- Birla Tyres
- Indag Rubber
- Yokohoma
- JK Tyres
- Vintex Rubber Industries

TEXTILE INDUSTRY

- Chenab Textiles
- Rajasthan Textile Mills
- Nirmal Fibers

INFRA & PROJECTS

- Abir Infra
- Beumer Group
- Blue Star
- Chennai Radha
- Doosan
- Effwa Infra & Research P. Ltd.
- Encon Thermal Engineers Pvt Ltd
- EPIL
- Era Infra
- F L Smidth
- Gas Tech
- GEBR PFEIFFER
- Hamtek India Limited
- IREO
- ISGEC
- IVRCL
- Macnelly Bharat
- Melcon
- Metco
- Mukund
- Om Metals
- Paharpur Cooling Towers Ltd
- Punj Lloyd
- Shapoorji Pallonji And Company Pvt. Ltd
- Sunil Hitech Engineers Ltd.
- Tata Projects Limited
- Thermax
- Thyssenkrupp
- TRF Ltd
- UP Irrigation
- VA Tech Wabag
- Voltas

OTHER MAJOR COMPANIES

- Airtrax Polymers
- ALU Décor
- Atomic Energy
- BEML
- Bharat Pumps
- Century NF Casting
- Dee Development
- Eureka Forbes
- Flowmore
- Gulati Steels
- HEG
- Hindustan Syringes & Medical Devices
- HMT
- HPL Additives
- INDIAN AIRFORCE
- ITC
- Jindal SAW Limited
- Metso Minerals
- Micro Precision
- Oil India Limited
- Orient Abrasive
- PP Engineering Works
- Studds Accessories
- Triveni
- Velumurugan Heavy Ind



CENTURY CRANE ENGINEERS (P) LTD.

Corporate office : Plot # 122-129, Sector-59, Part-2, Ballabgarh (Haryana)

Plant-II : Prithla Dhudhola Road, Distt. Palwal - 121002, Mob: 9910288366

E-mail : century@centurycranes.com