



CENTURY CRANE ENGINEERS (P) LTD.
Truck, Tractor & Floor Mounted Crane
AERIAL WORK PLATFORM

About us



We, introduce ourselves as one of the leading companies catering to material handling and fabrication requirements for over 25 Years. Fully equipped Two Manufacturing Plants at Faridabad, Ballabgarh and Palwal in Haryana , India, having a cumulative covered area over 12,500 Sq Meters.

We have Experienced and dedicated Design ,Production, Quality and Execution team having total strength of 150 personnel. We monitor project progress thru specifically designed ERP software, ensuring delivery commitments are met . We follow stringent quality processes starting from incoming inspection , in process inspection, load test (With Calibrated Loads) and all other tests as stipulated in relevant IS/IPSS/Approved QAP



OUR PRODUCT RANGE

- **Truck Mounted Cranes Telescopic Up to 20T** (1 Straight Boom, 2 Knuckle Boom)
- **Tuck Mounted Man Lifter (Aerial Work Platform)**
- **EOT Cranes, Hoists and Grab Buckets**
- Double Girder EOT from 0.5 T to 200 T and Goliath Cranes of capacity Up to 150 T.
- Single Girder EOT, HOT and Under slung Cranes of capacity Upto 25 T.
- Jib Cranes from 0.5 T to 10 T Electric Wire Rope Hoists from 0.5 T to 75 T
- Electrical winches 0.5 T to 100 T
- Electrical Trolleys up to 100 T
- Chain Pulley Block & Manual Hoists 500Kgs to 25 T
- Grab Buckets up to 15 Cu Mtr Capacity
- Low Head room Hoist & cranes with headroom as low as 600 mm
- Goods Lifts up to 10 T

We are approved by

- NTPC
- Atomic Energy
- TNEB
- BHEL
- APGENCO
- Fishner
- Cofmow
- MAHAGENCO
- HPGCL
- DLW
- Mecon
- OIL India
- SAIL
- MN Dastoor

AERIAL WORK PLATFORM



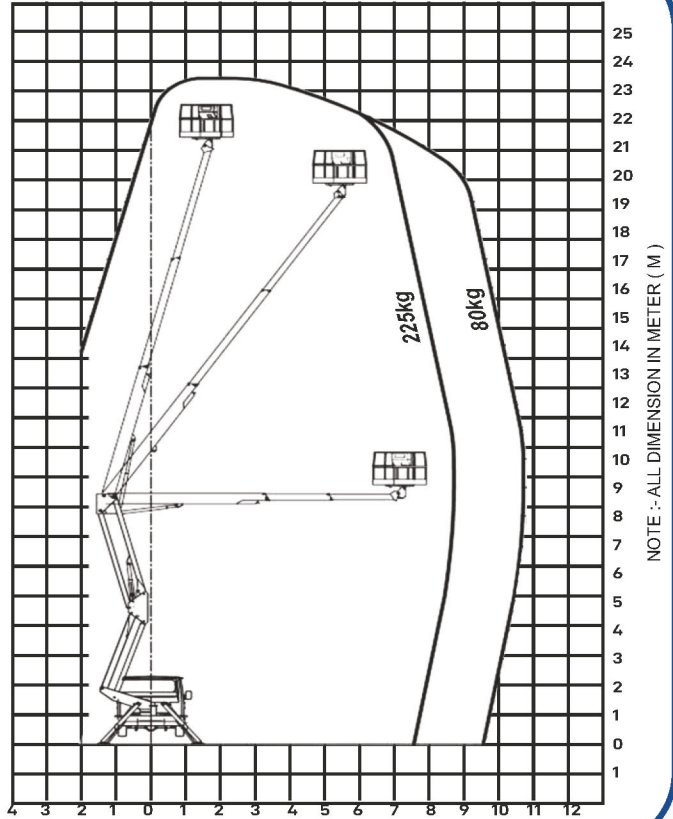
AERIAL WORK PLATFORM

CCL-24M

Operating Height	24 M
Bucket Bottom (From Ground)	21.70 M
Max Capacity	225 Kg
CONTROL	
Control	Thru Lever
Bucket Rotation	± 90 Degree
Base Rotation	360 Degree - Cont
BUCKET	
Bucket Material	Aluminium + Steel
Bucket Dimension (mm)	1400 X 700 X 1100

SAFETY FEATURES

Manual Hand Pump for Emergency
Load Cell Indicator
Level Indicator
Interlocking between Leg and Boom
Leg Deployment Indicator

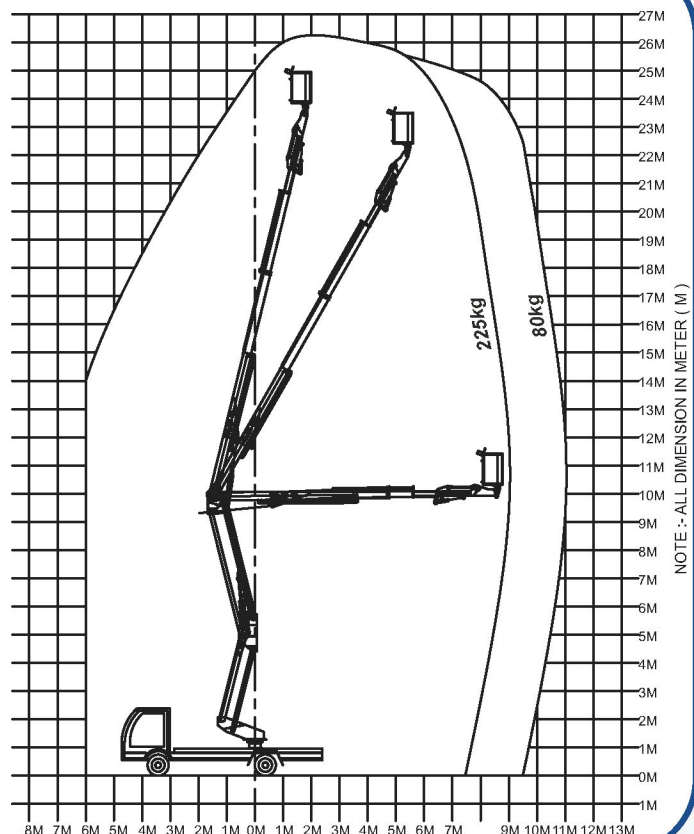


CCL-26M

Operating Height	26 M
Bucket Bottom (From Ground)	23.70 M
Max Capacity	225 Kg
CONTROL	
Control	Thru Lever
Bucket Rotation	± 90 Degree
Base Rotation	360 Degree - Cont
BUCKET	
Bucket Material	Aluminium + Steel
Bucket Dimension (mm)	1400 X 700 X 1100

SAFETY FEATURES

Manual Hand Pump for Emergency
Load Cell Indicator
Level Indicator
Interlocking between Leg and Boom
Leg Deployment Indicator



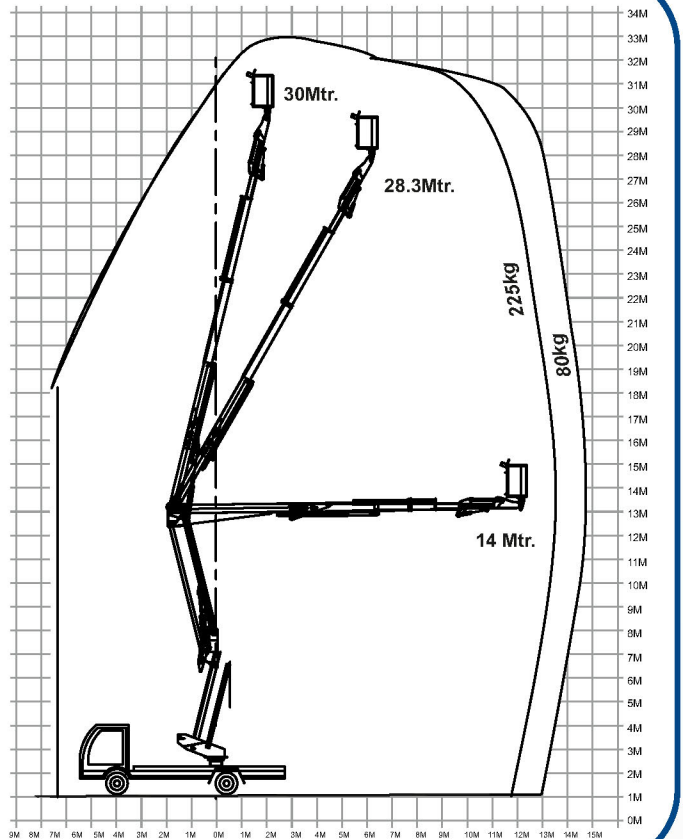
AERIAL WORK PLATFORM

CCL-30M

Operating Height	30 M
Bucket Bottom (From Ground)	28.3 M
Max Capacity	225 Kg
CONTROL	
Control	Thru Lever
Bucket Rotation	± 90 Degree
Base Rotation	360 Degree - Cont
BUCKET	
Bucket Material	Aluminium + Steel
Bucket Dimension (mm)	1400 X 700 X 1100

SAFETY FEATURES

Manual Hand Pump for Emergency
Load Cell Indicator
Level Indicator
Interlocking between Leg and Boom
Leg Deployment Indicator



H-Type Outrigger



Electronic Lever Indicator

Other Safety Features

- Audio Level Indicator
- Emergency Manual Hand Pump
- Boom V/S Selector for outrigger Deployment



Emergency Stop in Bucket



AERIAL WORK PLATFORM



OUR CLIENTS

Power

- Adani Power
- Angelique International Limited
- Areva
- Avantha Power
- Bevcon
- BGR
- BHEL
- DB Power
- Encon Thermal
- Energo
- Jindal Power
- Khari Power Project Private Limited
- L&T
- Lanco
- Mecawar Beekay
- Melco
- Mitsubishi Heavy Industries Ltd
- Noida Power Corporation
- NTPC
- Rajwest Power
- Reliance Power
- Tata Power
- Toshiba

HYDRO

- Andritz
- Boom
- Coastal Energy
- Flovel
- Greenko
- Hydro Power Corporation
- Irrigation Department
- Neon Energy
- NHPC
- Toshiba Plant Systems & Services Corporation (TPSC)
- Voith

CEMENT INDUSTRY

- ABG Cement
- ACC Cement
- Arhhakanchi Cement (P) ltd.
- Beumer Group
- Binani Cement
- FL Smidth
- GEBR
- Heidelberg Cement
- JP Sindhi Cement
- Malabar Cement
- Meghalay Cement
- Ultra tech Cement
- Vasavadutta Cement
- Zuari Cement

STEEL

- Avon Tubech
- BEC
- Beekay Engineering
- Bhilai Steel Plant
- Bhushan Steel Limited
- Bokaro Steel Plant
- Danielli India Limited

- Dev Energy
- EPI
- Essar Steels India Limited
- HEC Ltd
- HN Singh Construction Pvt Ltd
- IISCO Burnpur
- International Steel Services
- JSPL
- JSW
- Jyotindra Steel and Tubes
- L&T -MMH
- Magnum Steel
- NMDC
- Posco
- PP Rolling
- Preet Machines
- Rourkela Steel Plant
- Samsung
- Siemens Vai (Prime Metals)
- SMS Meer
- Tata Steel Water Divison Jusco
- Vizag Steel

AUTO INDUSTRY

- ACE
- Allena Auto
- BEML
- Escorts
- Euro Bearing
- Hema
- Indo Auto Tech Limited
- Jaycee Auto
- JBM
- Linde India Ltd.
- Mahindra
- Motherson
- Mushasi Auto
- PPAP
- RICO Auto
- Roop Automotives Ltd.
- Wahi Sons
- Yamaha
- Yuken India

PAPER INDUSTRY

- Akula Paper Board
- Bhagwati Kripa Paper Mills
- Everest Paper Mills
- Krofta Paper
- Kumar Printers
- Paper Products Limited
- Sree Chakra

RUBBER INDUSTRY

- ATC Tyres
- Balakrishna Tyres
- Birla Tyres
- Indag Rubber
- Yokohoma
- JK Tyres
- Vintex Rubber Industries

TEXTILE INDUSTRY

- Chenab Textiles
- Rajasthan Textile Mills
- Nirmal Fibers

INFRA & PROJECTS

- Abir Infra
- Beumer Group
- Blue Star
- Chennai Radha
- Doosan
- Effwa Infra & Research P. Ltd.
- Encon Thermal Engineers Pvt Ltd
- EPIL
- Era Infra
- F L Smidth
- Gas Tech
- GEBR PFEIFFER
- Hamtek India Limited
- IREO
- ISGEC
- IVRCL
- Macnelly Bharat
- Melcon
- Metco
- Mukund
- Om Metals
- Paharpur Cooling Towers Ltd
- Punj Lloyd
- Shapoorji Pallonji And Company Pvt. Ltd
- Sunil Hitech Engineers Ltd.
- Tata Projects Limited
- Thermax
- Thyssenkrupp
- TRF Ltd
- UP Irrigation
- VA Tech Wabag
- Voltas

OTHER MAJOR COMPANIES

- Airtrax Polymers
- ALU Décor
- Atomic Energy
- BEML
- Bharat Pumps
- Century NF Casting
- Dee Development
- Eureka Forbes
- Flowmore
- Gulati Steels
- HEG
- Hindustan Syringes & Medical Devices
- HMT
- HPL Additives
- INDIAN AIRFORCE
- ITC
- Jindal SAW Limited
- Metso Minerals
- Micro Precision
- Oil India Limited
- Orient Abrasive
- PP Engineering Works
- Studds Accessories
- Triveni
- Velumurugan Heavy Ind



CENTURY CRANE ENGINEERS (P) LTD.

Corporate office : Plot # 122-129, Sector-59, Part-2, Ballabgarh (Haryana)

Plant-II : Prithla Dhudhola Road, Distt. Palwal - 121002, Mob: 9910288366

E-mail : century@centurycranes.com